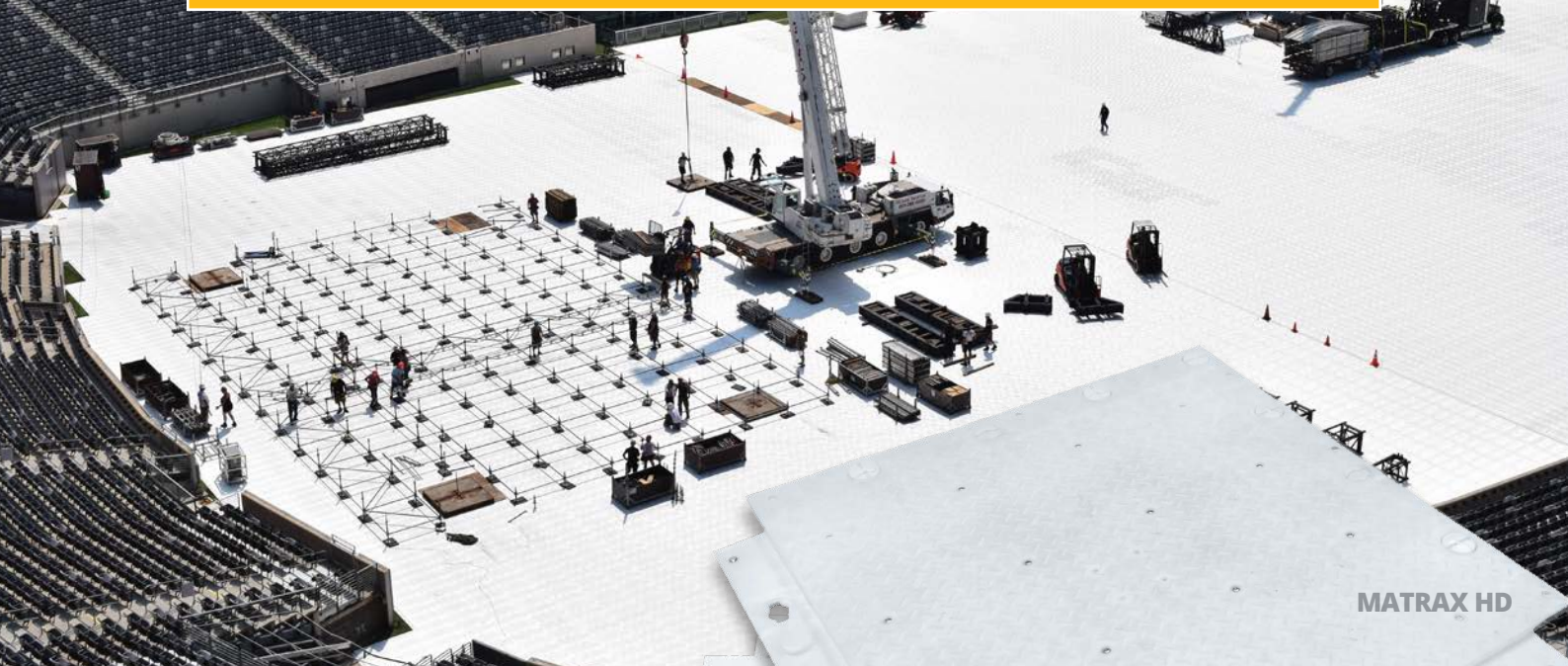




Matrax

THE ORIGINAL BIG TILE TURF PROTECTOR



HIGH PERFORMANCE

Portable flooring system
Protects turf from damage

LIGHTWEIGHT

Easy to install, handle
and transport

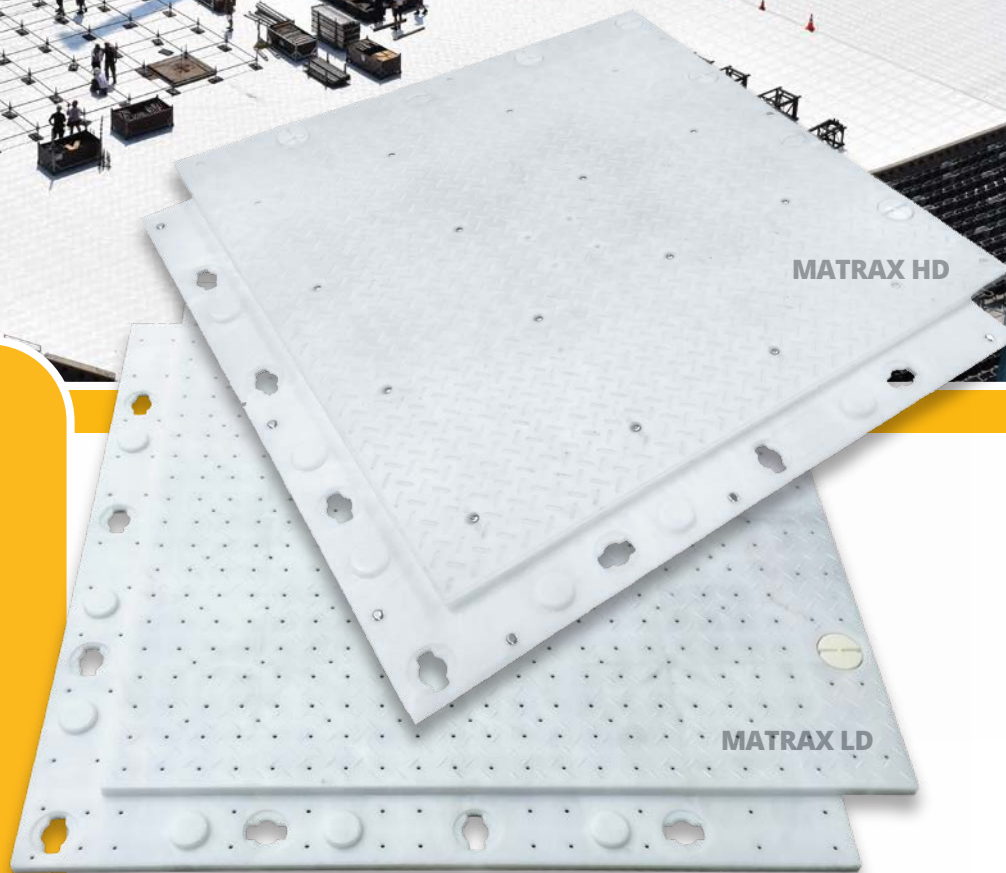
STRONG

Continuous overlapping lips
with a quarter turn locking
mechanism

Reinforced with additives for
strength and ultra violet
resistance

ENVIRONMENTALLY FRIENDLY

100% recyclable



*For temporary vehicular access and
pedestrian flooring at outdoor
events and stadia, this is the
original market-leading product.*

www.ground-guards.co.uk

+44 (0) 113 267 6000

info@ground-guards.co.uk

Ground-Guards®



Matrax

THE ORIGINAL BIG TILE TURF PROTECTOR

Protect your turf from the rigours of a non-sporting event!

The Matrax high-performance system is custom designed for use in stadiums and other large-scale venues that wish to maximise their revenue by hosting other events.

The Matrax system has two options: HD and LD Panels which integrate seamlessly together to provide optimum turf protection for both vehicular and pedestrian traffic.

MATRAX HD

FOR VEHICULAR ACCESS

- Vehicle and pedestrian friendly
- Closed-back design for maximum load-bearing capacity
- Supports heavy loads including delivery lorries and rigging cranes
- Anti-slip diamond tread pattern



SOLID CLOSED BACK



MATRAX LD

FOR PEDESTRIAN ACCESS

- Pedestrian friendly
- Open-back design enables grass to continue growing
- Strong but lightweight for easy handling
- Translucent plastic with air holes to allow additional light, oxygen and water drainage



TRANSLUCENT OPEN BACK



Length:	1220mm
Width:	1220mm
Surface Area:	1.23m ²
Thickness:	38mm
Weight:	22.68 kg (Matrax HD)
	13.8kg (Matrax LD)

Ground-Guards®

www.ground-guards.co.uk
+44 (0) 113 267 6000
info@ground-guards.co.uk