

# FastCoverPLUS™



With the urgent need to keep the economy functioning and to safely reopen retail, industrial and construction sites, the management of pedestrian traffic flows is a top priority.

The new FastCover PLUS system is ideal for this, enabling safe walkways to be created with clearly defined 2m spacings. These walkways can be for one-way flow, or have designated passing places, or even be as separate lanes for continuous pedestrian flows in opposite directions.

The FastCover PLUS mats have unique interlocking lugs, which positively connect together to provide secure safe walkways without trip hazards on uneven ground.

These environmentally friendly and cost-effective mats are made in the UK from 100% recycled PVC. They have inbuilt hand holes and weigh just 14.5kg, making them easy to handle. Their ability to accommodate heat expansion makes them suitable for all-year-round outdoor use.

They are also suitable for a wide range of portable surface applications, including flooring for marquees or military shelters, and temporary surface protection for block paving or interior floors during construction projects.

*Temporary surface system, ideal for creating safe walkways that encourage social distancing*



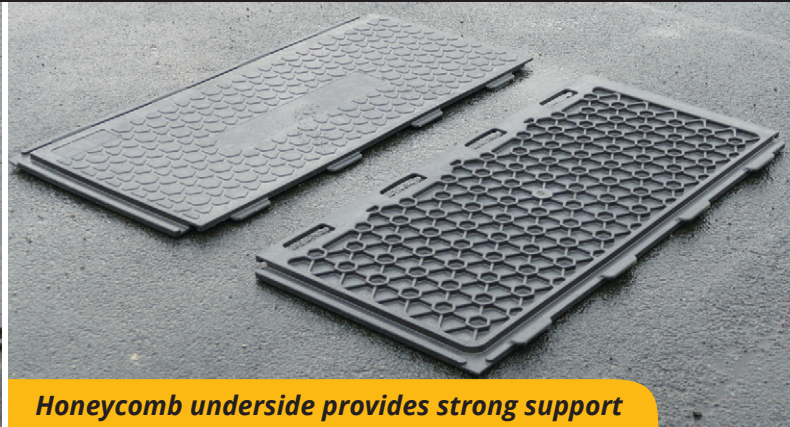
**GroundGuards®**

+44 (0)113 267 6000  
info@ground-guards.co.uk  
www.ground-guards.co.uk

# FastCoverPLUS™



*Mat lugs positively overlap and interlock*



*Honeycomb underside provides strong support*



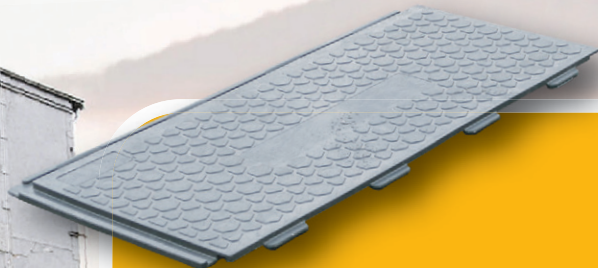
*Hand holes make them easy to carry*



*Mats are simple and quick to connect together*



*Ideal for marquees and military shelters*



## **DIMENSIONS & WEIGHT**

Overall size: ..... 1200 x 600  
x 22mm

Surface size:..... 1165 x 545mm

Surface area: .....0.63m<sup>2</sup>

Weight: ..... 14.5kg

**GroundGuards®**

+44 (0)113 267 6000  
info@ground-guards.co.uk  
www.ground-guards.co.uk